



CLIMATRANS INC.

www.climatrans.com

Eastern Canada

## HYDRAULIC AIR-CONDITIONING COMPRESSOR DRIVES

### POLAR P-9976 PRODUCT LINE

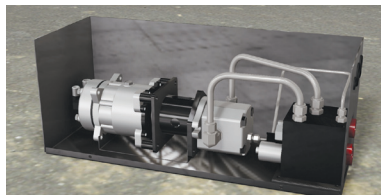
...designed for maximum reliability in mobile equipment!

...manufactured for the rigorous environments of the Mining, Forestry, Heavy Construction and Military industries!

- Available for "Open Center" Open or Closed" Loop Systems to Max 3000psi /20685Kpa
- Available for "Closed Center" Pressure Compensated or Load Sense Systems to Max 3000psi /20685Kpa
- Available in 12vdc or 24vdc



**P-9976-11**  
Hyd Comp Drive



**P-9976-11-OC-12**  
Open Center Loop System



**P-9976-11-CC-12**  
Closed Center Pressure Comp/  
Load Sense System

### SPECIFICATIONS

- Compressor Rotation Clockwise Only (MAX 3000 RPM)
- Refrigeration Capacity 21,400 BTU/HR (6.3 KW) at 2300 Rpm
- With Evap Gas Temperature of 36F / 2C & Inlet Evap Air Temp of 76F / 24C

### HYDRAULIC REQUIREMENTS

#### P-9976-11 (0.67Cu"/11cc Motor)

- Required Input Hydraulic Volume = 6 Gpm/22L to 7 Gpm/26L
- Adjustable Volume to Compressor 0.67Cu"/11cc Motor =3.5 Gpm/13L to 7 Gpm/26L
- Required Pressure = 1500psi /10350Kpa to Max 3000psi /20685Kpa
- Input Hydraulic Power Consumption 5.2 HP (3.5 KW) AT 2300 Rpm

#### P-9976-19 (1.16 Cu"/19cc Motor)

- Required Input Hydraulic Volume = 11 Gpm/41L to 15 Gpm/57
- Adjustable Volume to Compressor 1.16 Cu"/19CC Motor =7.5 Gpm/28L to 15 Gpm/57L
- Required Pressure = 827psi / 5700Kpa to Max 3000psi /20685Kpa
- Input Hydraulic Power Consumption 5.2 HP (3.5 KW) AT 2300 Rpm

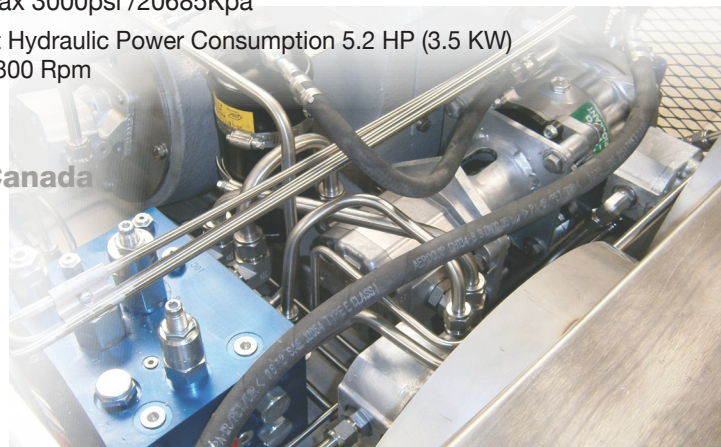
**POLAR MOBILITY**  
we deliver proven quality!

### POLAR MOBILITY RESEARCH LTD.

Calgary - Red Deer - Edmonton, Alberta Canada

e-mail info@polarmobility.com  
North America phone 1-800-309-8155  
International phone 1-403-279-3633  
International fax 1-403-236-2759

**www.polarmobility.com**





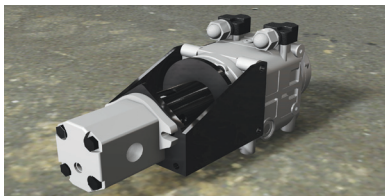
# HYDRAULIC AIR-CONDITIONING COMPRESSOR DRIVES

## POLAR P-9976 PRODUCT LINE

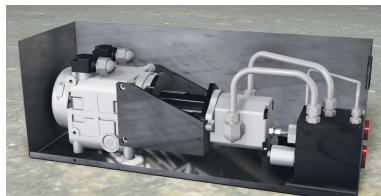
...designed for maximum reliability in mobile equipment!

...manufactured for the rigorous environments of the Mining, Forestry, Heavy Construction and Military industries!

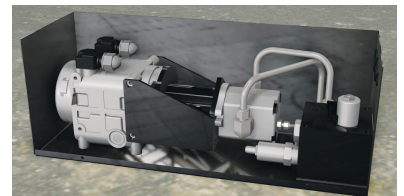
- Available for "Open Center" Open or Closed" Loop Systems to Max 3000psi /20685Kpa
- Available for "Closed Center" Pressure Compensated or Load Sense Systems to Max 3000psi /20685Kpa
- Available in 12vdc or 24vdc



**P-9976-29**  
Hyd Comp Drive



**P-9976-29-OC-12**  
Open Center Loop System



**P-9976-29-CC-12**  
Closed Center Pressure Comp/  
Load Sense System

## SPECIFICATIONS

- Compressor Rotation Clockwise Only (MAX 3000 RPM)
- Refrigeration Capacity 47,000 BTU/HR (13.87 KW) at 2700 Rpm
- With Evap Gas Temperature of 36F / 2C & Inlet Evap Air Temp of 76F / 24C

## HYDRAULIC REQUIREMENTS

### ► P-9976-29 (1.16 Cu"/19CC Motor)

- Required Input Hydraulic Volume = 13.6 Gpm/ 52L to 15 Gpm/57L
- Adjustable Volume to Compressor 1.16 Cu"/19CC Motor = 7.5 Gpm/28L to 15 Gpm/57L
- Required Pressure = 1500psi /10350Kpa to Max 3000psi /20685Kpa
- Input Hydraulic Power Consumption 11.7 HP (7.8 KW) AT 2700 RPM

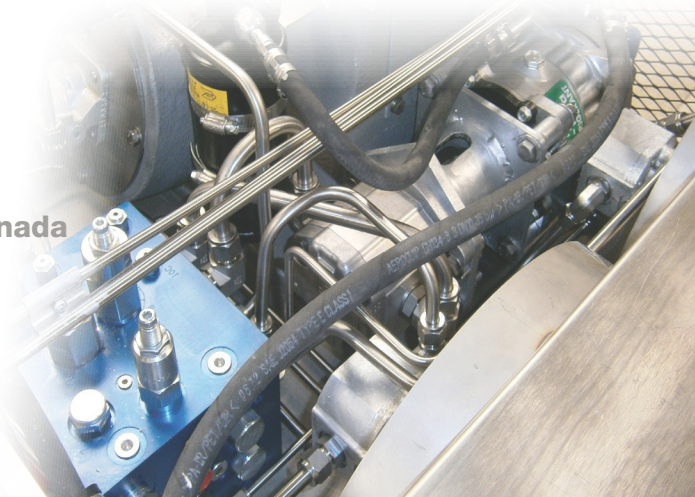
**POLAR MOBILITY**  
we deliver proven quality!

## POLAR MOBILITY RESEARCH LTD.

Calgary - Red Deer - Edmonton, Alberta Canada

e-mail info@polarmobility.com  
North America phone 1-800-309-8155  
International phone 1-403-279-3633  
International fax 1-403-236-2759

**www.polarmobility.com**







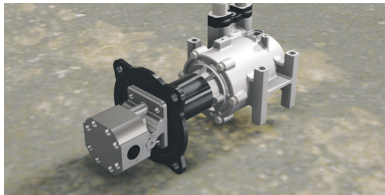
# HYDRAULIC AIR-CONDITIONING COMPRESSOR DRIVES

## POLAR P-9976 PRODUCT LINE

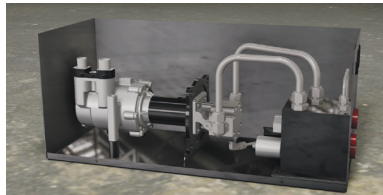
...designed for maximum reliability in mobile equipment!

...manufactured for the rigorous environments of the Mining, Forestry, Heavy Construction and Military industries!

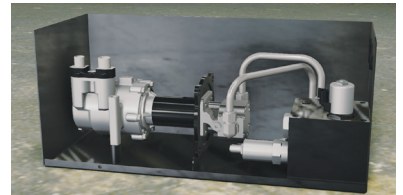
- Available for "Open Center" Open or Closed" Loop Systems to Max 3000psi /20685Kpa
- Available for "Closed Center" Pressure Compensated or Load Sense Systems to Max 3000psi /20685Kpa
- Available in 12vdc or 24vdc



**P-9976-3**  
Hyd Comp Drive



**P-9976-33-OC-12**  
Open Center Loop System



**P-9976-33-CC-12**  
Closed Center Pressure Comp/  
Load Sense System

## SPECIFICATIONS

- Compressor Rotation Clockwise Only (MAX 4200 RPM)
- Refrigeration Capacity 18360 BTU/HR (5.4 KW) at 4000 Rpm
- With Evap Gas Temperature of 36F / 2C & Inlet Evap Air Temp of 76F / 24C

## HYDRAULIC REQUIREMENTS

### ► P-9976-33

- Input Hydraulic Volume = 3 GPM/11.44L to 4 GPM/15L MAX
- Required Pressure = 827psi / 5700Kpa to Max 3000psi /20685Kpa
- Input Hydraulic Power Consumption 4.60 HP (3.1 KW) AT 4000 Rpm

**POLAR MOBILITY**  
we deliver proven quality!

## POLAR MOBILITY RESEARCH LTD.

Calgary - Red Deer - Edmonton, Alberta Canada

e-mail info@polarmobility.com  
North America phone 1-800-309-8155  
International phone 1-403-279-3633  
International fax 1-403-236-2759

**www.polarmobility.com**

